

DHI Herdcode	Test Type & Description	Breed	Sample Date	Process Date
93 99 1234	31 DHI-AP	HO	8/19/10	9/09/10

JOHN Q. DAIRYMAN

Peak Production & Persistency

	CALVING MONTH												TOTAL/ AVG
	JUN 09	JUL 09	AUG 09	SEP 09	OCT 09	NOV 09	DEC 09	JAN 10	FEB 10	MAR 10	APR 10	MAY 10	
1st LACTATION													
Number Cows	5	2	8	6	8	11	8	7	7	6	4	3	75
Peak DIM	146	185	130	180	110	91	97	91	79	84	63	39	106
Peak Milk	79	90	78	92	84	82	79	78	77	68	78	69	79
Current MLM	93	98	97	102	99	100	93	93	94	88	93	91	95
Persistency	1.2	0.9	0.6	1.2	1.0	0.5	0.9	0.5	0.8	1.1	0.6	0.4	0.8
2nd LACTATION													
Number Cows	7	3	7	7	4	5	7	5	7	4	4	5	65
Peak DIM	43	39	83	76	66	57	71	106	49	42	40	47	62
Peak Milk	117	129	113	126	126	113	110	111	114	112	117	110	116
Current MLM	95	102	98	116	107	106	100	102	106	99	98	101	102
Persistency	0.2	-0.2	0.5	-0.3	0.1	0.0	0.3	0.2	-0.1	0.1	0.1	0.1	0.1
3rd+ LACTATION													
Number Cows	20	3	9	14	14	6	17	19	8	6	7	7	130
Peak DIM	61	74	54	68	56	90	60	66	52	51	65	52	62
Peak Milk	117	121	120	114	132	135	121	120	133	114	110	116	121
Current MLM	98	117	108	102	108	122	108	105	115	108	92	101	105
Persistency	0.3	-0.2	0.3	0.3	-0.2	-0.1	0.1	0.1	0.0	0.1	0.5	0.2	0.1
ALL COWS													
Number Cows	32	8	24	27	26	22	32	31	22	16	15	15	270
Peak DIM	71	89	88	95	74	83	72	78	60	61	58	48	74
Peak Milk	111	116	104	112	116	104	108	109	109	97	103	105	108
Current MLM	96	106	101	106	105	107	102	102	105	98	94	99	102
Persistency	0.4	0.1	0.4	0.4	0.2	0.2	0.4	0.2	0.2	0.5	0.4	0.2	0.3

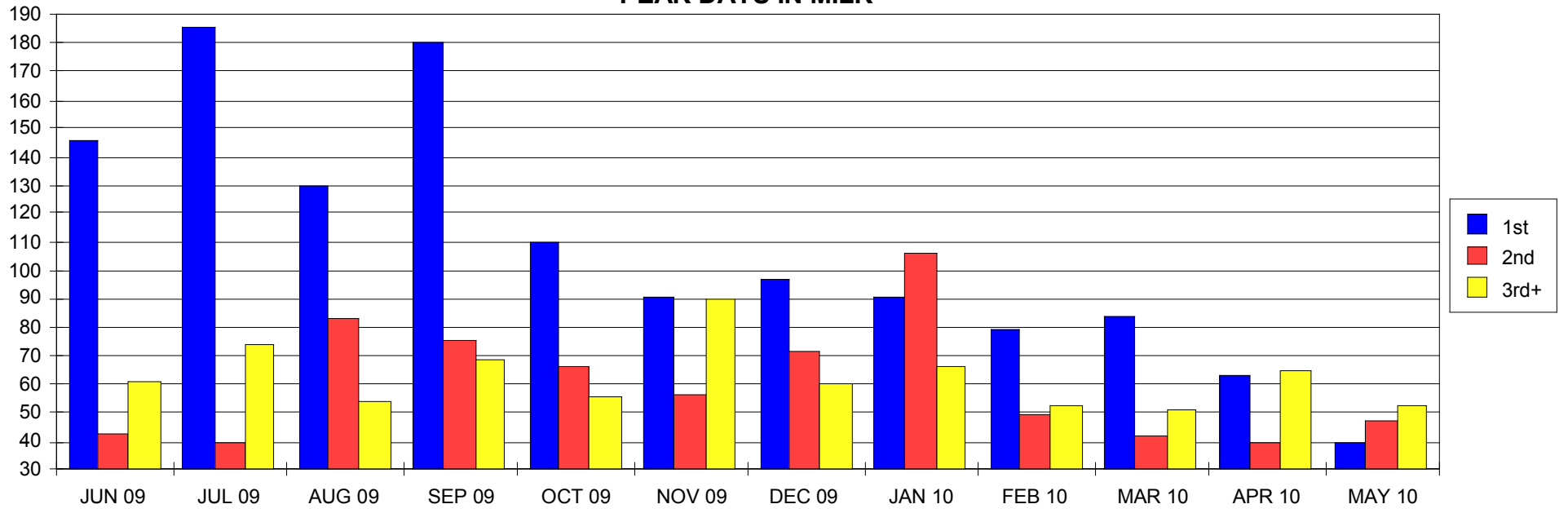
Management Level Milk allows the comparison of daily milk production for individual cows or groups of cows in different lactations and stage of lactation. It adjusts the cow's test-day production up to 305-days to the middle (150-days) of lactation and standardizes milk pounds to 3.5% fat and 3.0 % protein.

Persistency is an indication of how a cow or a group of cows conform to a standard lactation curve. Positive values indicate that the production exceeds those that are normally expected. Conversely, negative values result from animal(s) that do not produce to the standards of a normal lactation curve.

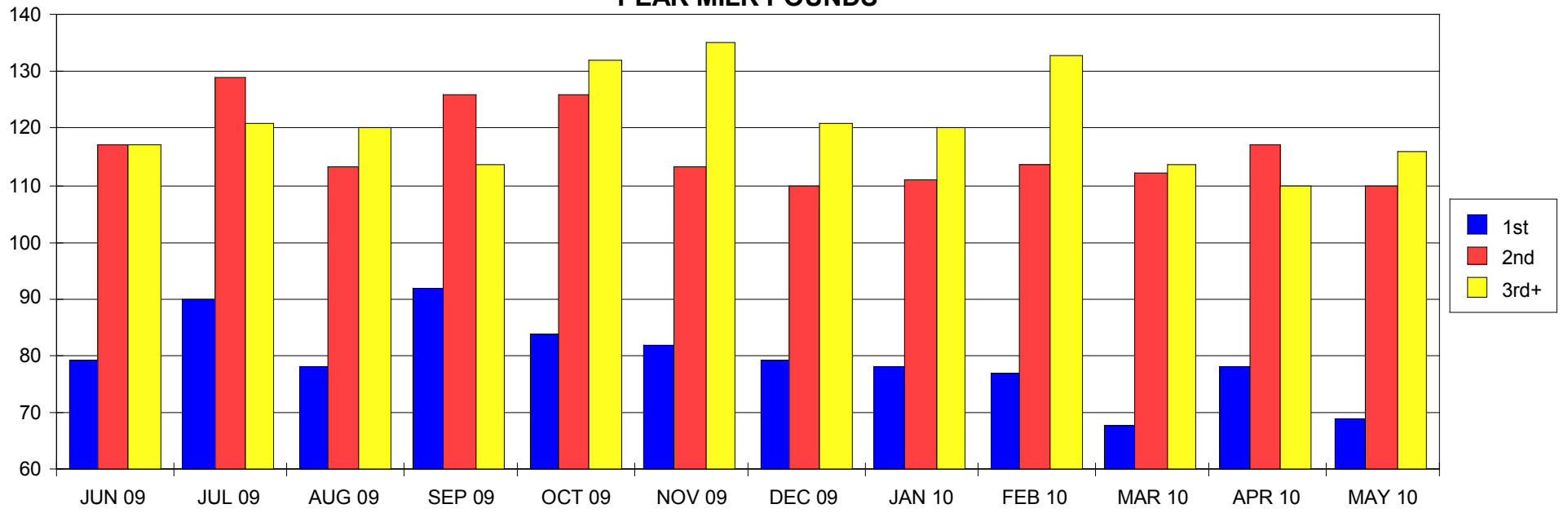
JOHN Q. DAIRYMAN

Peak Production & Persistency

PEAK DAYS IN MILK



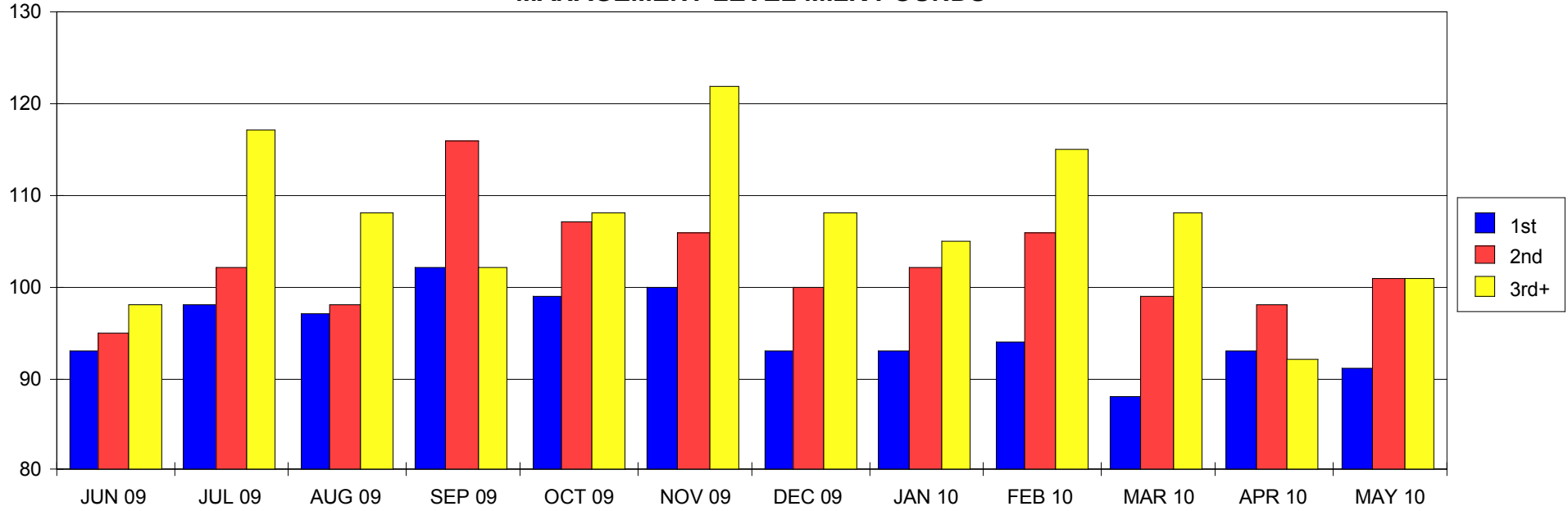
PEAK MILK POUNDS



JOHN Q. DAIRYMAN

Peak Production & Persistency

MANAGEMENT LEVEL MILK POUNDS



PERSISTENCY

